

# VNC Viewer User Manual

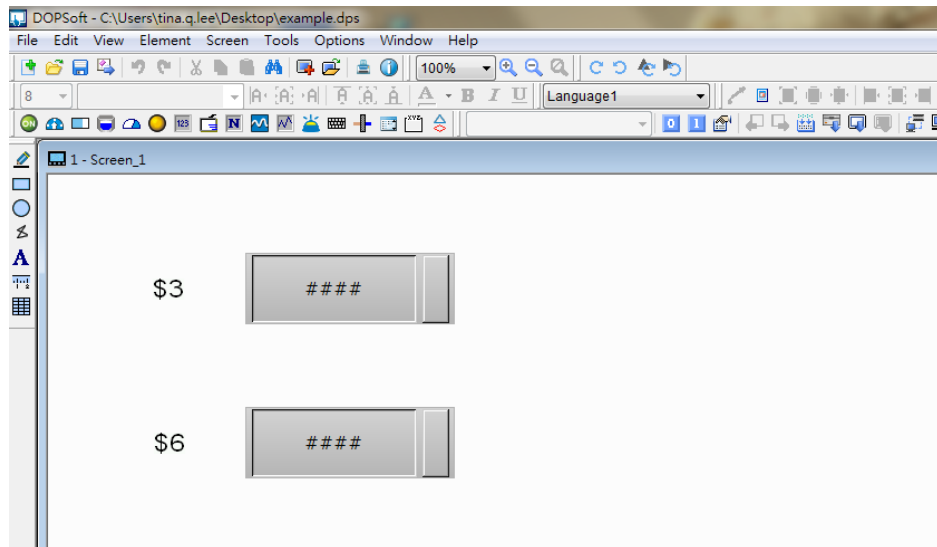
VNC (Virtual Network Computing) is a PC software used to help the customers view and check the same screen shown on W series of HMI at the production site, and control the manufacturing process via Ethernet. No matter where you are, remote controlling is not an arduous task at all.

Support HMI of W Series, includes W105B, W127B and W157B.

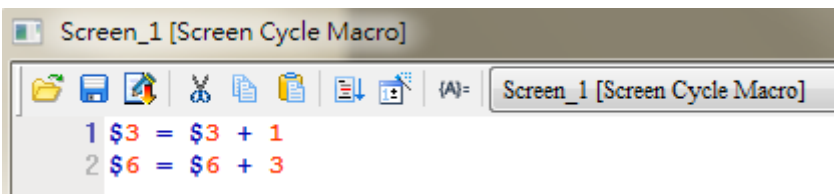
## I. Connection introduce for HMI

### ☞ Create HMI Project File

Start DOPSoft software program for w series and click **File > New** or click **New** icon to create a new project. Then, click **Element > Input > Numeric Entry** to create two numeric entry elements (\$3 and \$6) on the screen. In this case, W105B type DOP W series HMI is used.

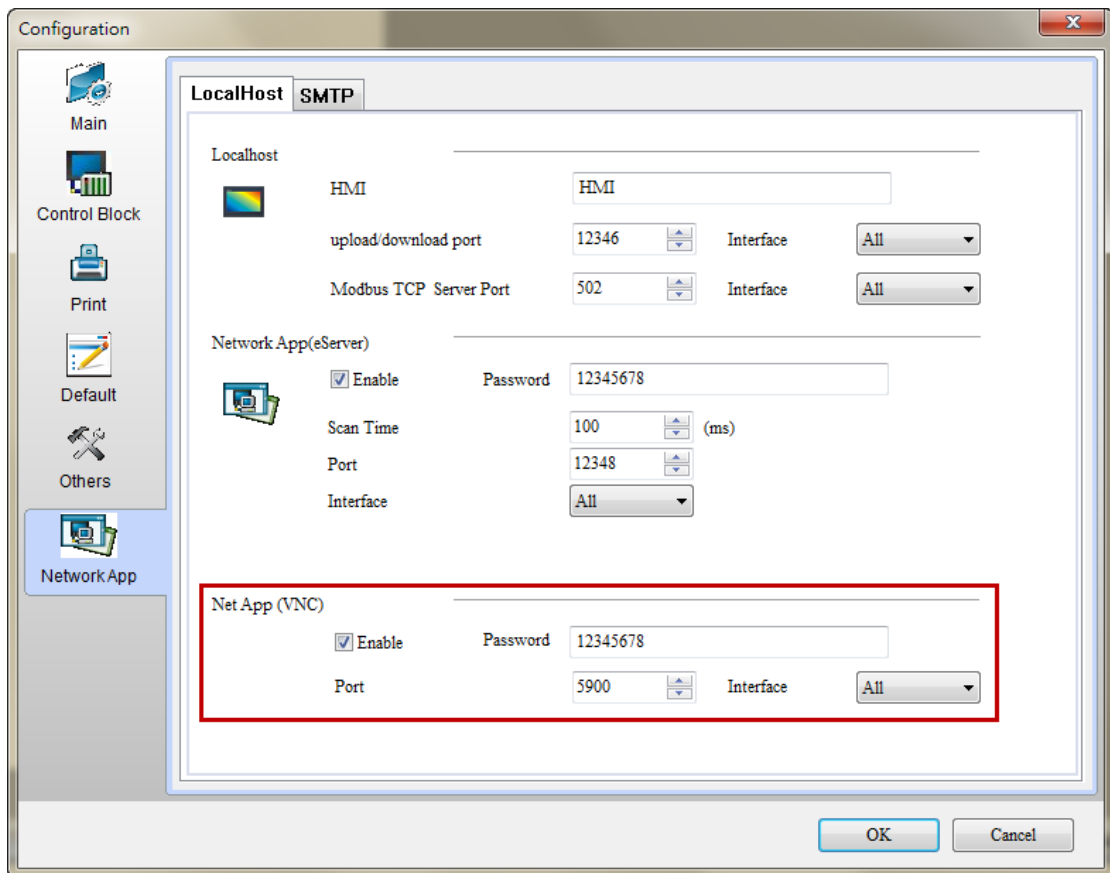


Use Screen Cycle Macro and enter the following commands in macro command window.



How to use VNC Viewer to connect with HMI

Click **Options > Configuration > Network App > LocalHost**, check the Application (Net App VNC) function **Enable**. Then, press **OK** button to finish the settings.



After finishing above setting, please compile and download all screen data to HMI.

## II. VNC Setting

There are three ways to use VNC Viewer to connect with HMI.

- Computer Software
- Web Browser
- Android App

### a. Computer Software

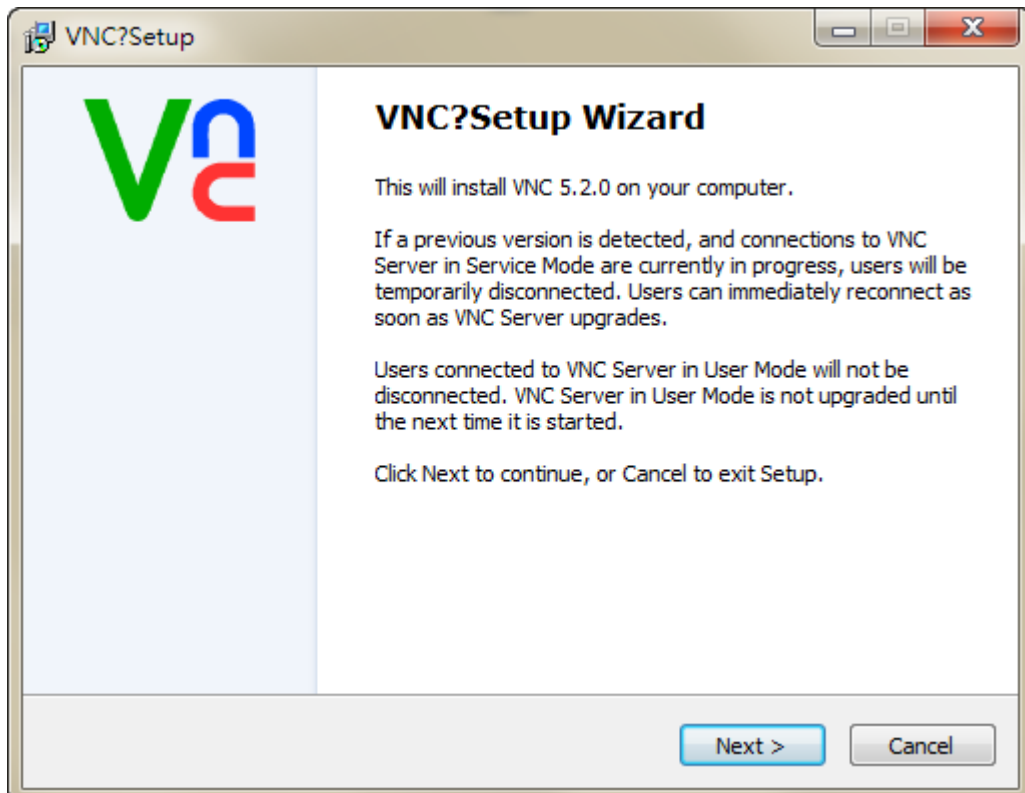
#### 👉 Software installation

Please following the below URL link to download VNC software which adapt the operating system.

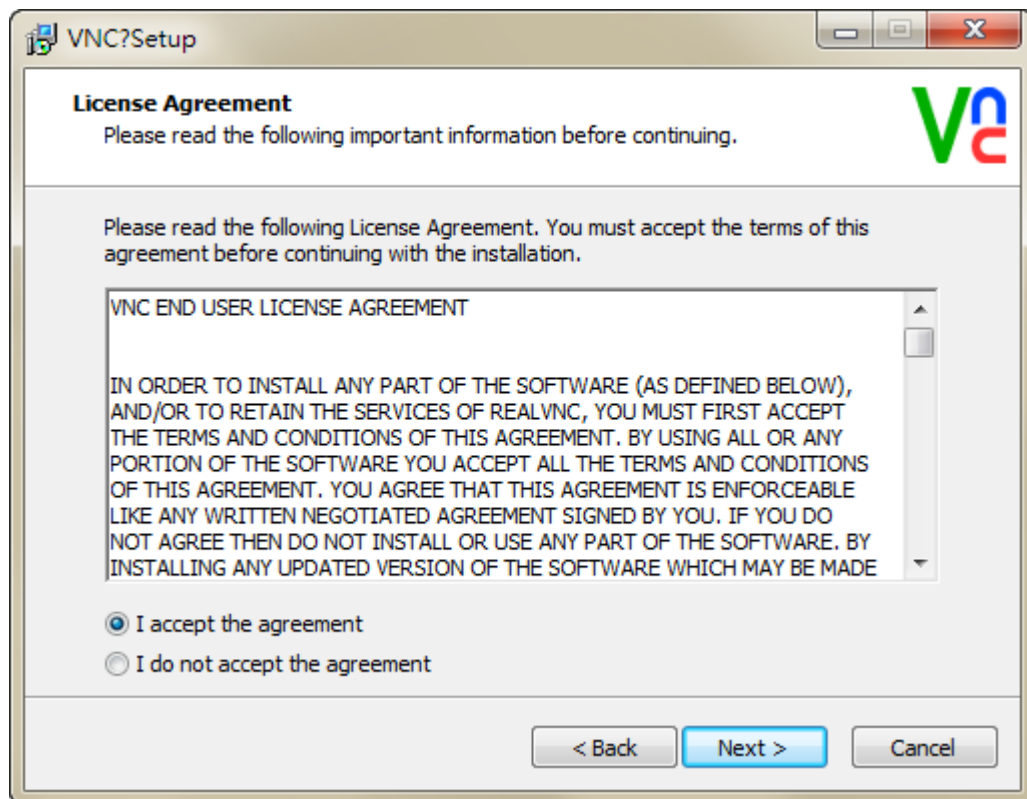
<http://www.realvnc.com/download/vnc/latest/>

After double clicking VNC-5.2.0-Windows file downloaded from the website exe file, the following dialog box will appear. Click on Run button to install VNC.

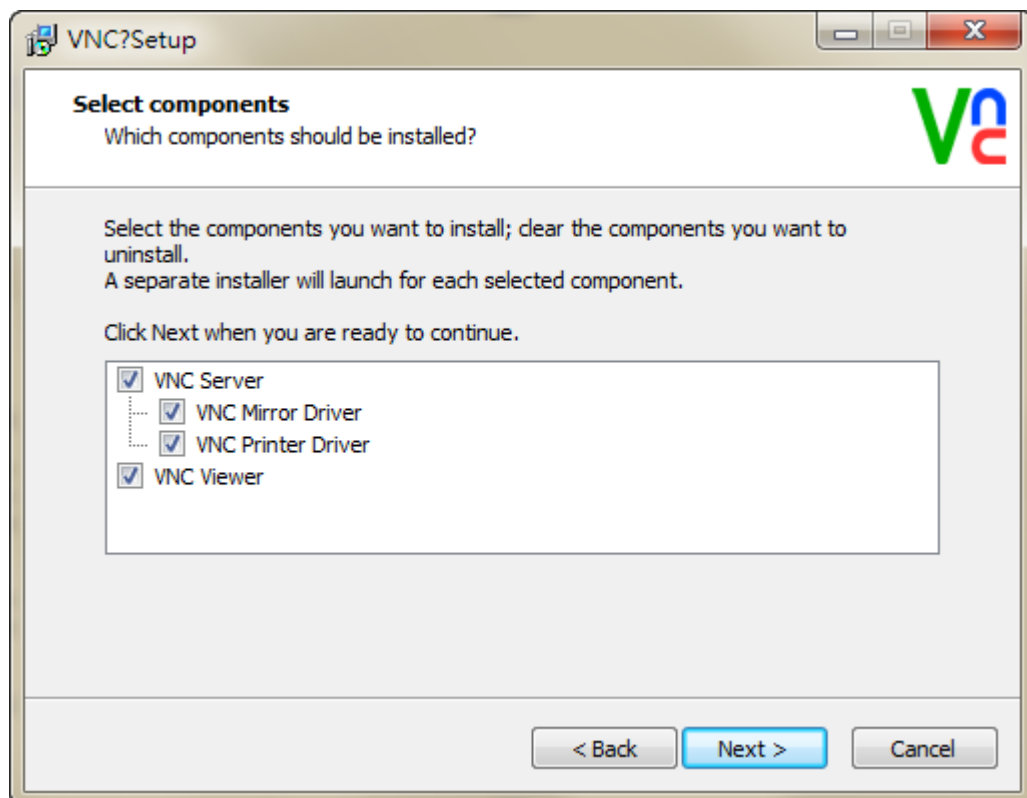
Please click on **Next**.



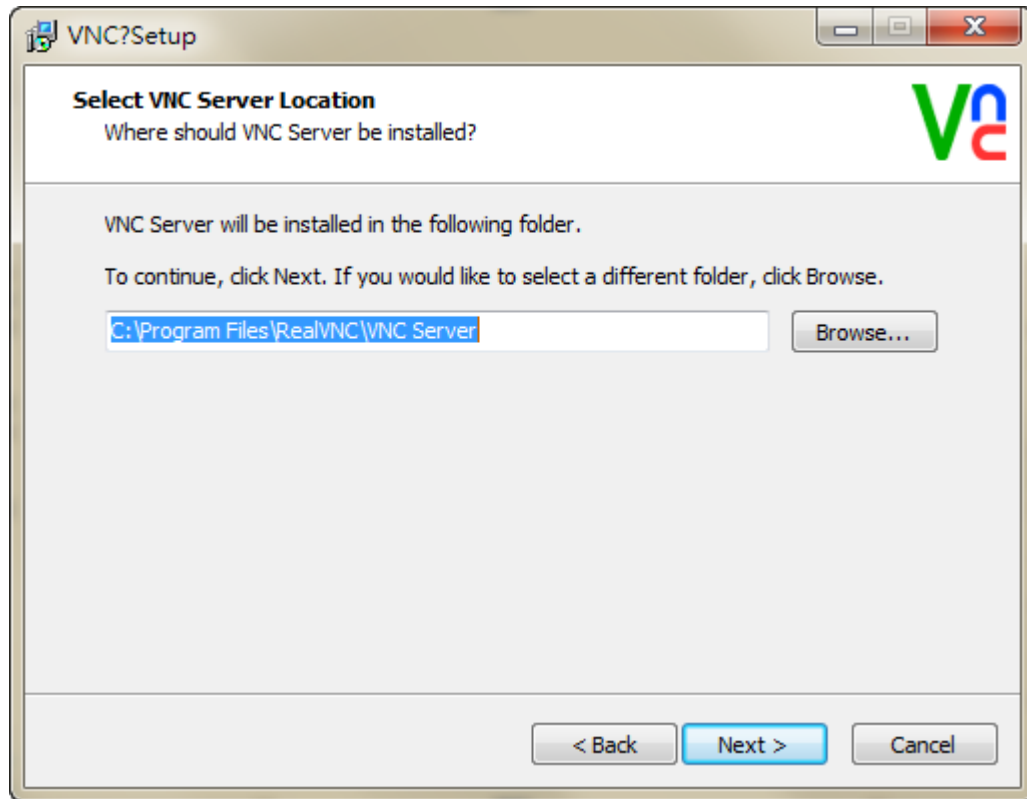
Please choose **I accept the agreement**, and then click on **Next**.



Please check all components, and then click on **Next**.

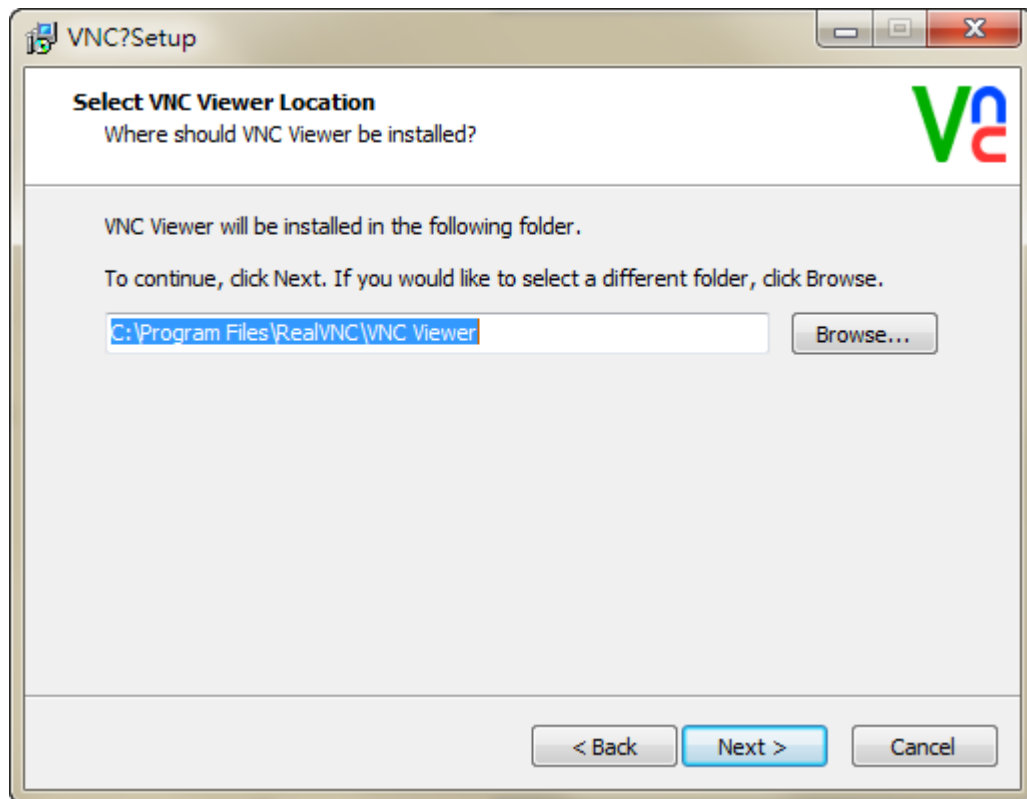


Select the default directory C:\Program Files\RealVNC\VNC Server, and click on **Next** button for the next step. To select a directory other than the default directory, click Browse.

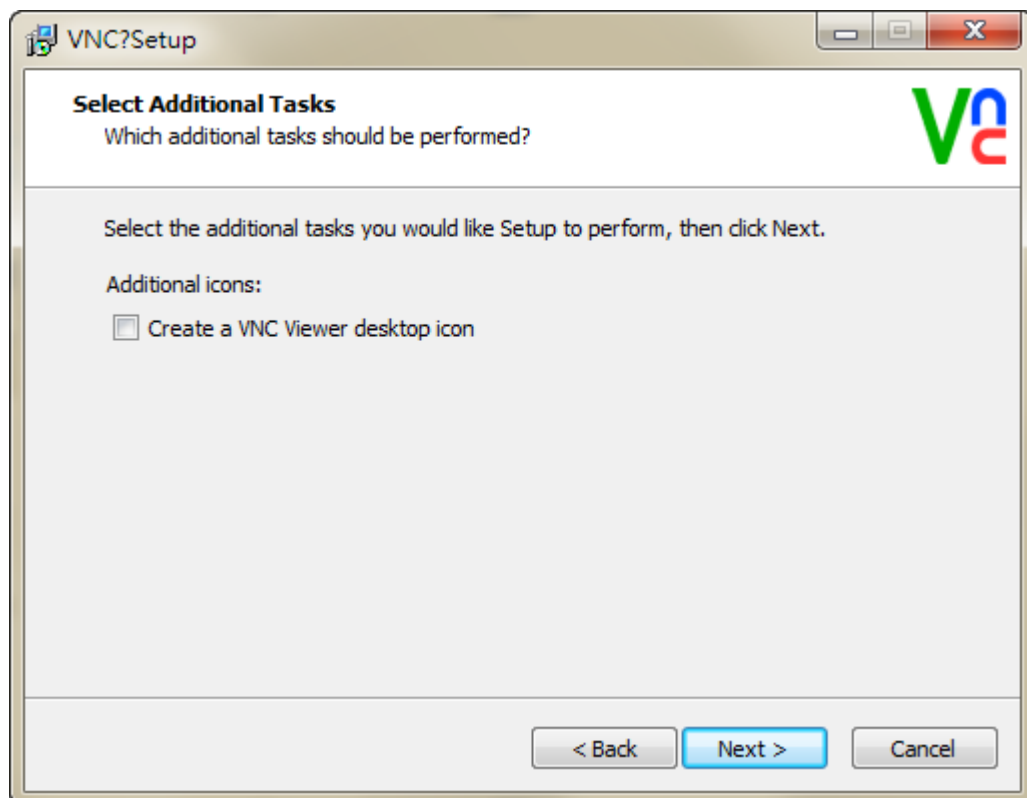


Select the default directory C:\Program Files\RealVNC\VNC Viewer, and click on Next button for the next step. To select a directory other than the default directory, click Browse.

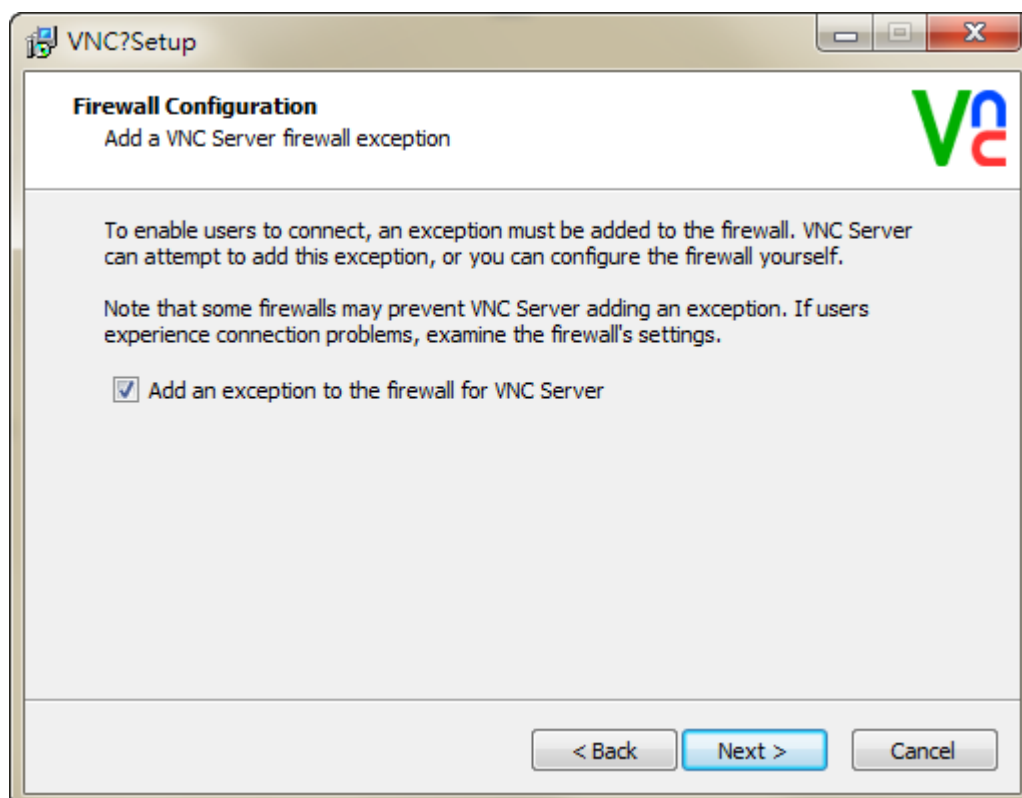
How to use VNC Viewer to connect with HMI



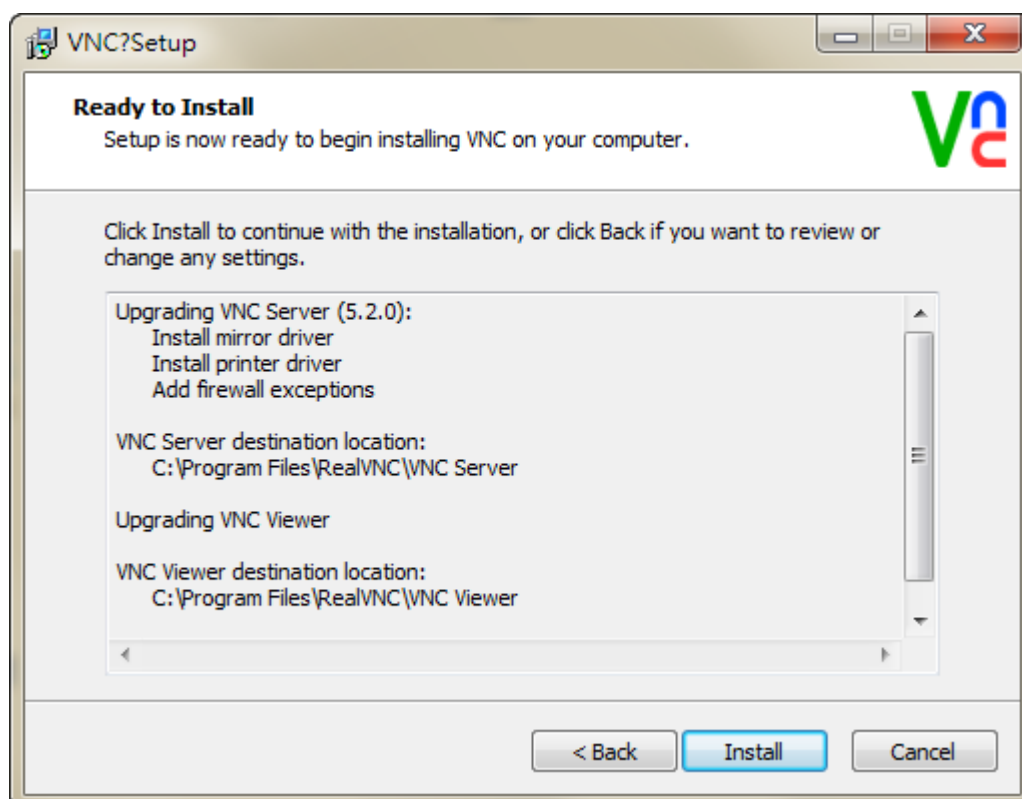
User could check create a VNC Viewer desktop icon option or not and then click on **Next**.



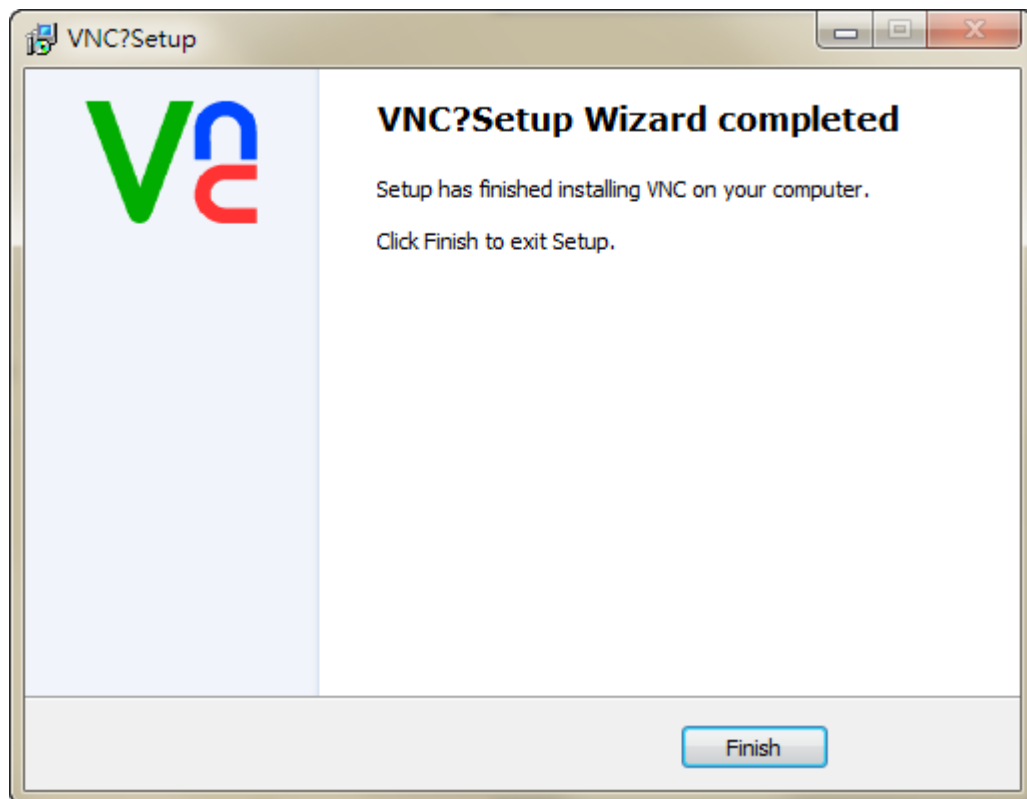
Please check the **Add an exception to the firewall for VNC Server**, and then click on **Next**.



Please click on **Install** button to install VNC.




Click on **Finish** button to complete VNC setup.



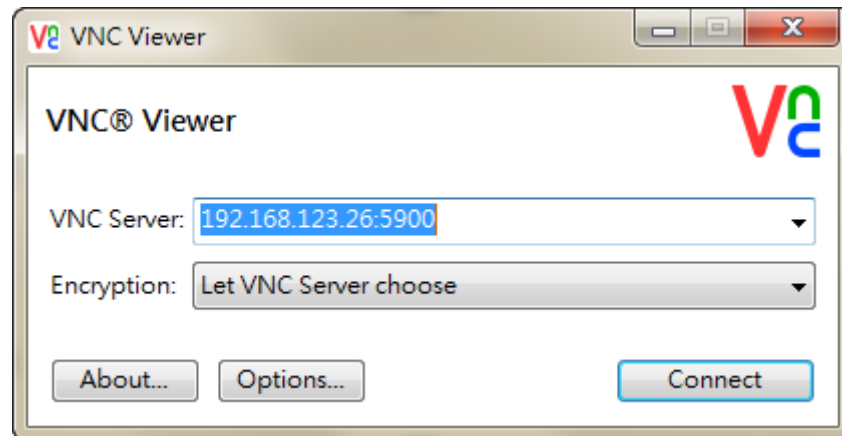
#### **Start VNC Viewer**

Start VNC Viewer and following as below setting, click on Connect.

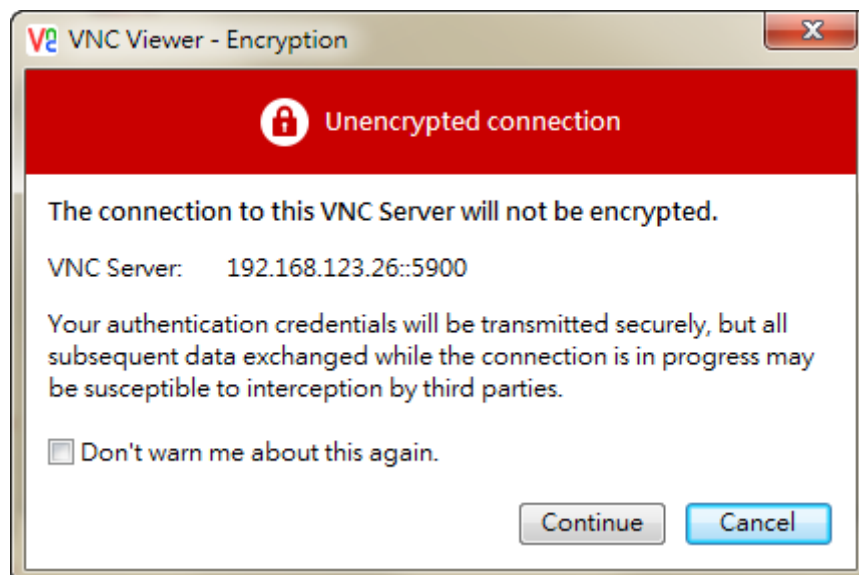
 VNC Server : Please input VNC Server IP Address and connection port. The IP Address is HMI IP Address and the connection port is click **Options > Configuration > Network App > LocalHost of DOPSoft**, set port of the Application (Net App VNC) function. The connection example for HMI IP Address is **192.168.123.26:5900**. If DOPSoft software changed the port to 5902, the VNC Viewer must be input 5902 to connect.

 Encryption : Please select **Let VNC Server choose**.

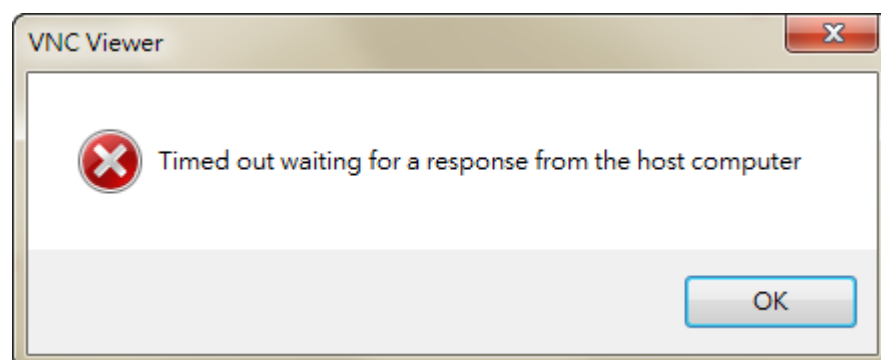




If connection is successfully, it will appear the following window to remind user this connection is unencrypted. User could ignore this warning and click on **Continue**.



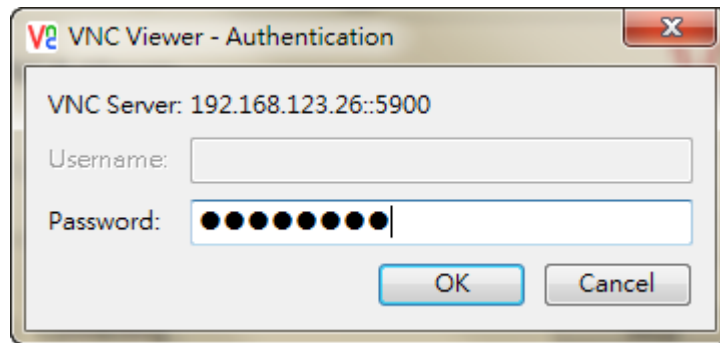
But if connection is failed, it will appear the following window. It means the IP address does not exist or the VNC network application is not enabling.



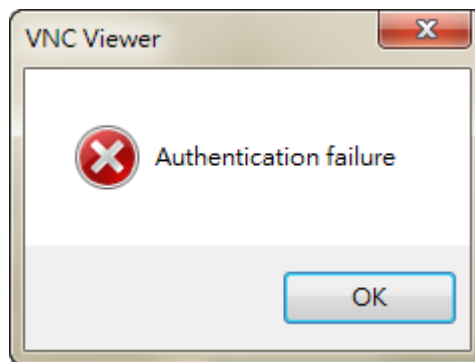
After connection successfully, VNC will ask user to input the

How to use VNC Viewer to connect with HMI

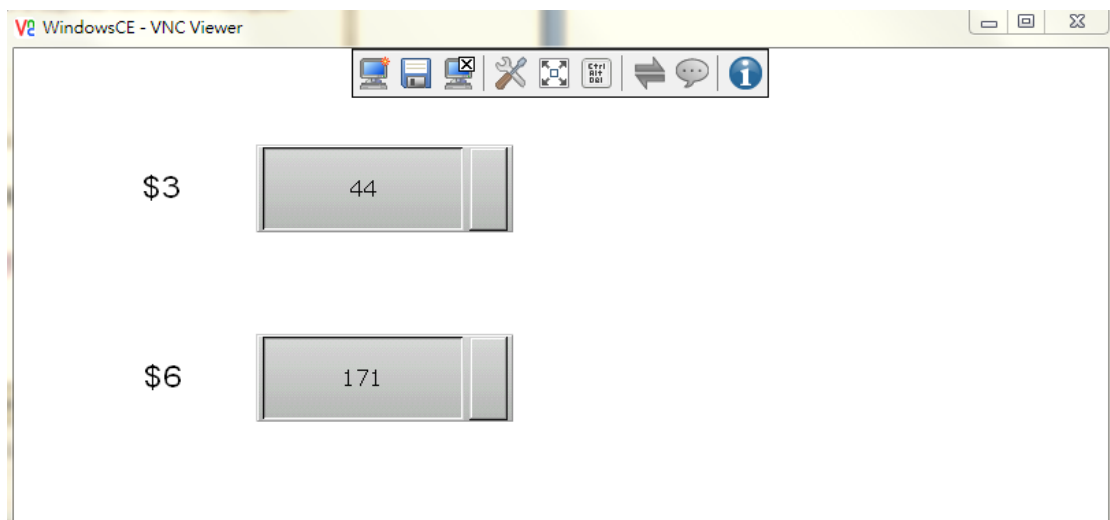
connection password for HMI and VNC. The password is [DOPSoft Network App password setting of VNC](#), default is 12345678.



If type incorrect password, it will appear the following message.



After authentication pass, the connection is established.

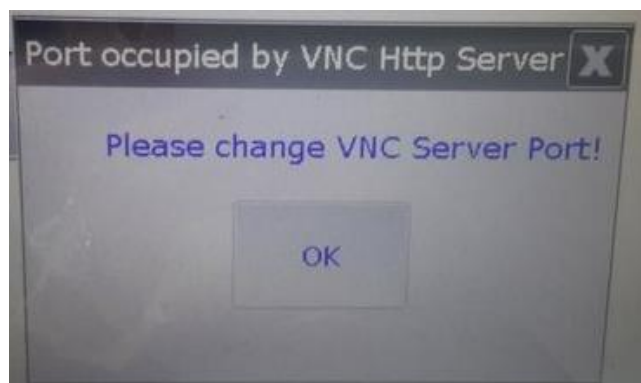


## b. Web Browser

VNC Viewer also provide web browser, it is have an easy connection way with typing HMI IP address and port number.

Note :

- ✓ The default connection port number for web browser is 5800. Please do not set the connection number port to 5800 in VNC network setting in DOPSoft. If user set to 5800, after download to HMI, it will appear following as below message to inform user to change port number.



- ✓ It needs to install JAVA to open the browser.

Step1. Open the web browser, for example is using Google Chrome.

☞ Google Chrome browser connection example:

Please type the IP address and port number:

**http://192.168.123.48:5800/**

☞ IE browser connection example:

Please type the IP address and port number:

**http://192.168.123.26:5800/**

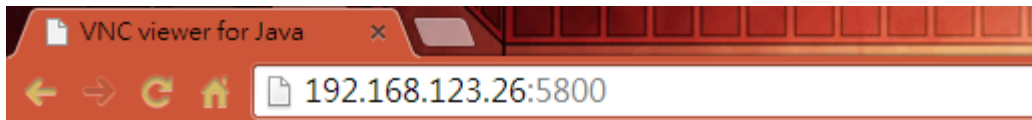
☞ Firefox browser connection example:

If use Firefox browser to connect, please turn off the proxy at first.

Then type the IP address and port number:

**http://192.168.123.26:5800/**

If type incorrect IP address, it will not display any content.



VNC Viewer Free Edition 4.1

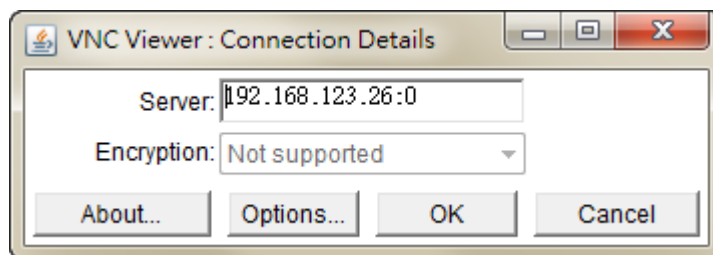
Credits:

Peica Chen (China)

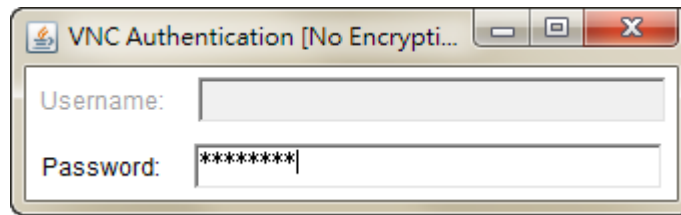
Johan Henning (Netherlands)

See <http://www.efon.cn> for information on VNC.

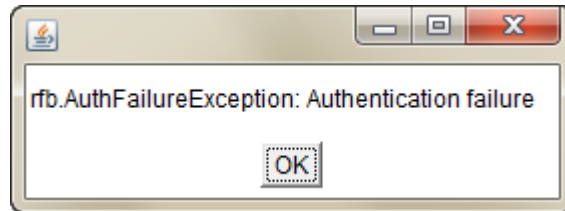
After typing the correct IP address, it will appear following as below window, please click on OK.



Step2. Please input the password to connect with HMI, the default password is 12345678 which set from DOPSoft VNC.



If type incorrect password, it will display as below error message.



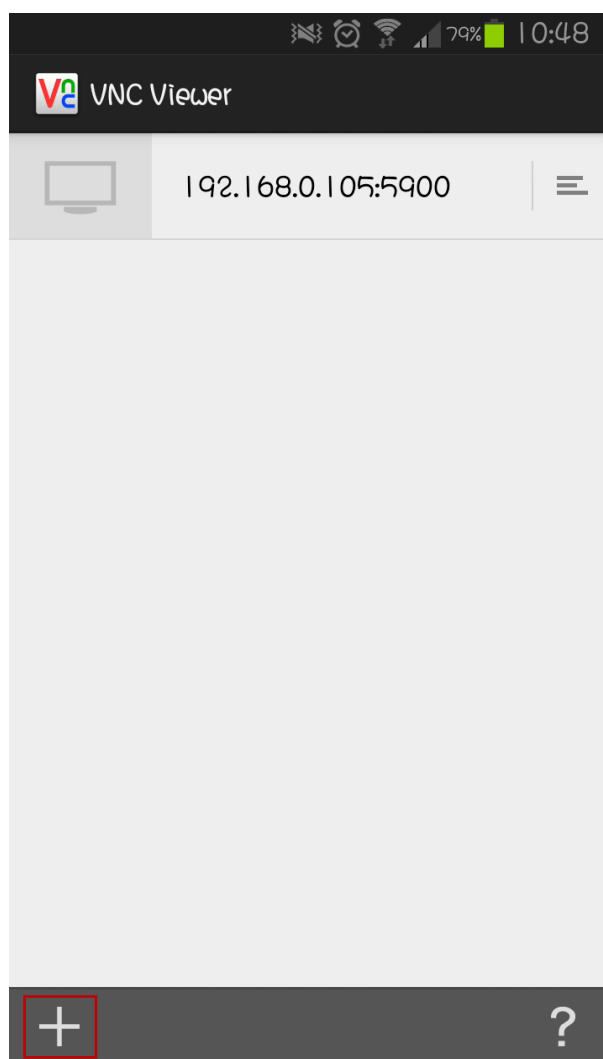
Step3. After authenticate successfully, the connection is established.



**c. Android App**

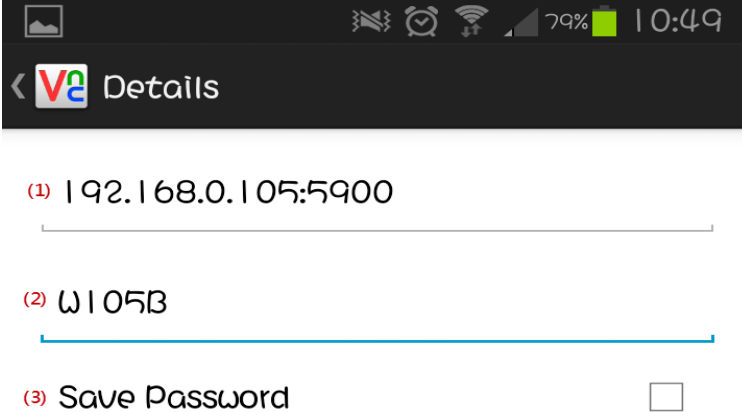
Please get the VNC Viewer App from Google play store at first. After download, please execute the app to finish the following steps.

Step1. Please click on the bottom left corner 【 + 】 to add new connection.



Step2. Input the connection IP address and connection name.

- (1) Please input HMI IP address and port number.
- (2) User could custom the connection name.
- (3) Please do not check the save password option.
- (4) After finishing above setting, please click on the below icon.

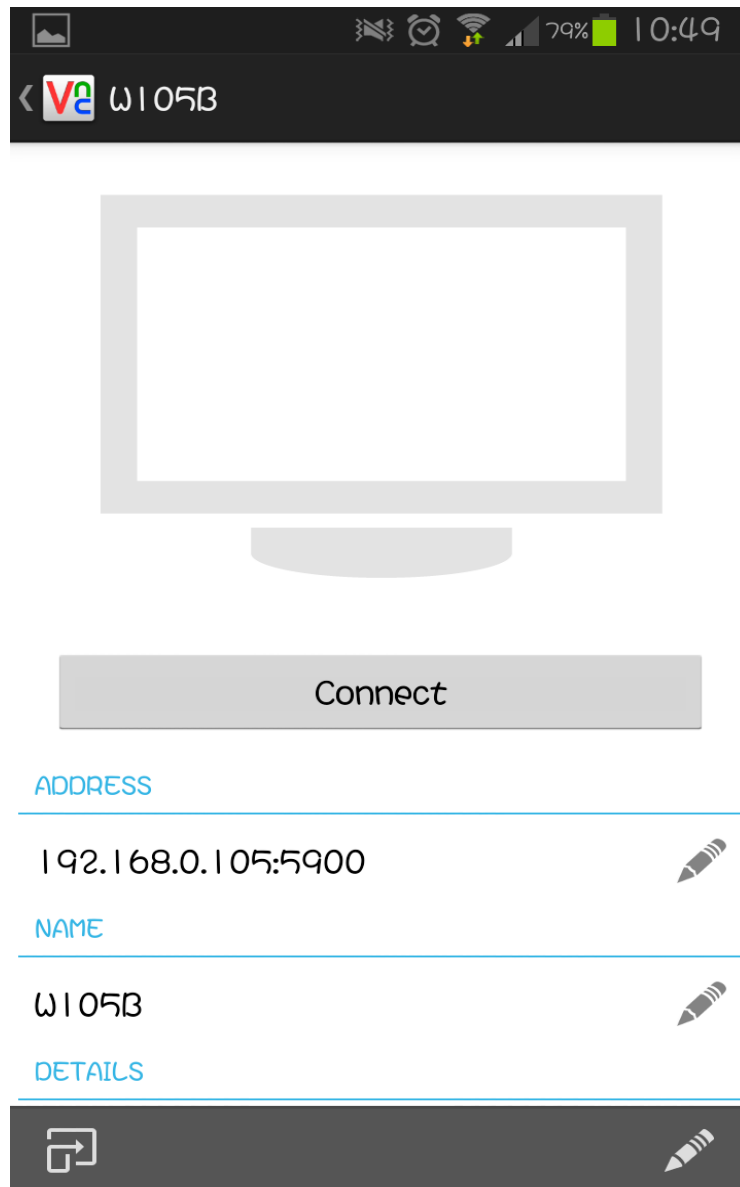


The screenshot shows the 'Details' screen of VNC Viewer. At the top, there is a status bar with icons for signal, alarm, Wi-Fi, and battery (79%), and the time 10:49. Below the status bar is a header with a back arrow, the VNC logo, and the word 'Details'. The main content area contains three items:

- (1) A text input field containing '192.168.0.105:5900'.
- (2) A text input field containing 'W105B'.
- (3) A checkbox labeled 'Save Password' which is currently unchecked.

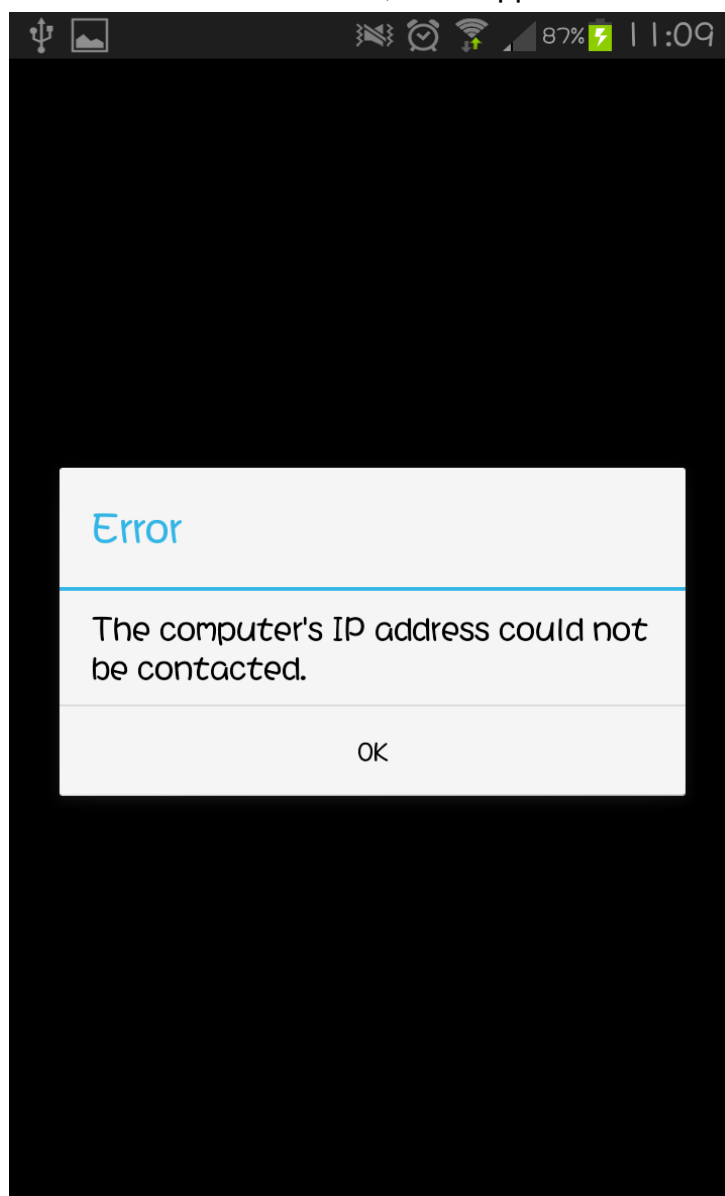


Step3. Complete the setting, it will display as below figure.  
Please click on **Connect**.

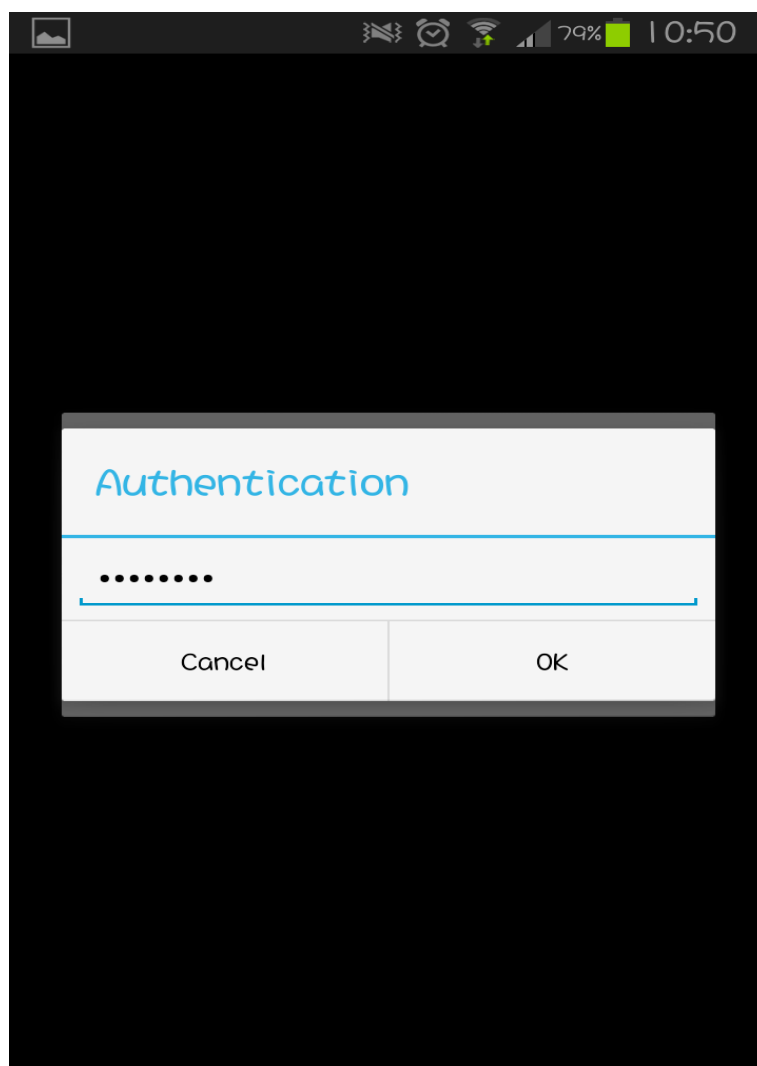




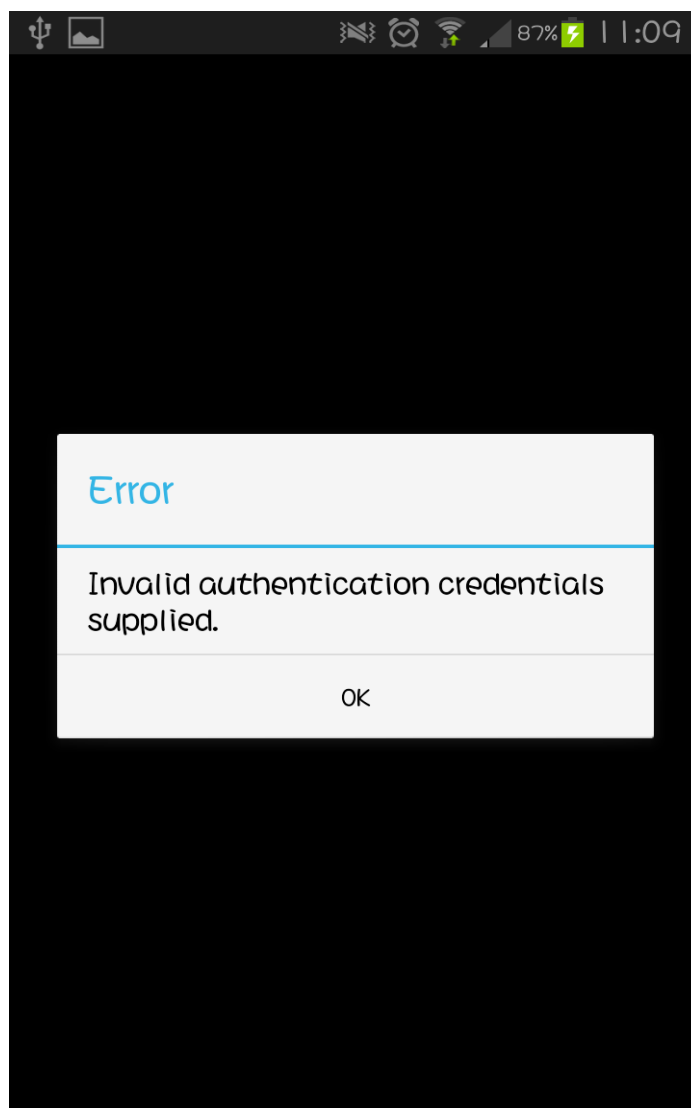
If input the incorrect IP address, it will appear the following message.



Step4. It will ask user to input the password to connect with HMI, the default password is 12345678 which set from DOPSoft VNC.



If input the incorrect connection password, it will appear the following message.



Step5. After authenticate successfully, the connection is established.



\$3



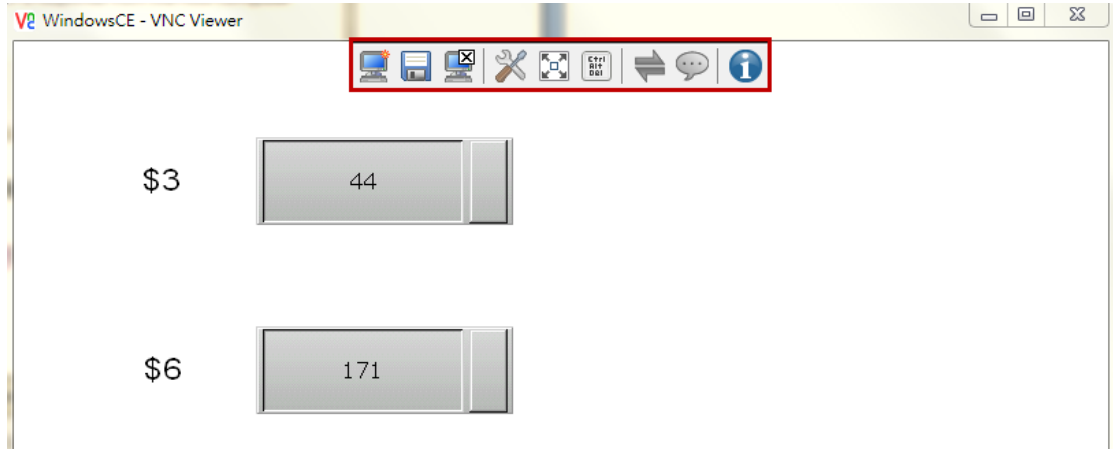
\$6





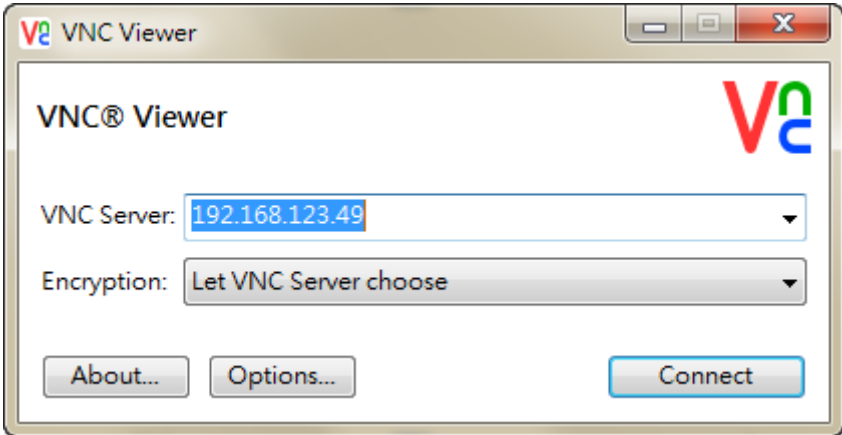
.

### III. VNC Viewer Detail Setting

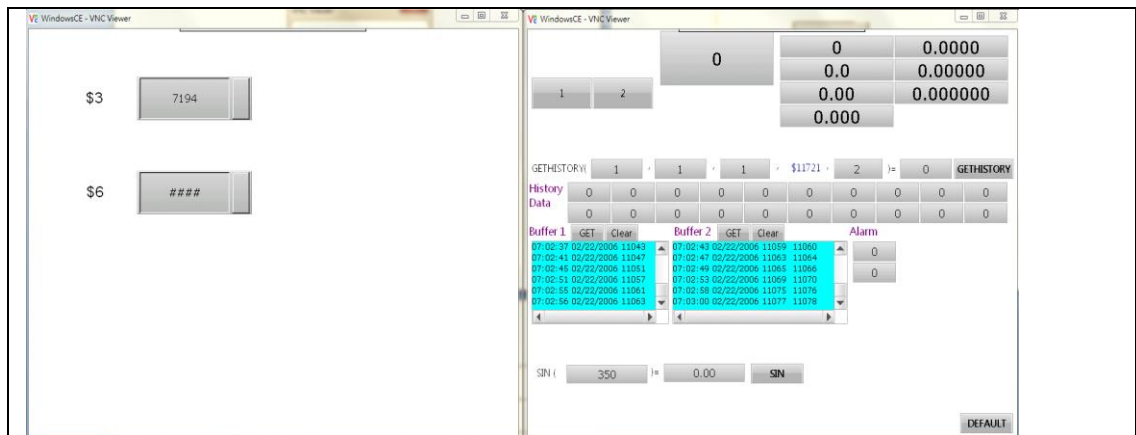
After the VNC Viewer connected with HMI, move the mouse to the upper window, it will appear the tool bar.



The following table will introduce related function.

	<b>New connection</b>	Use new connection could operate multiple HMI.
<p>1. Click on  , it will appear as below window to type another HMI IP Address for operating.</p> <div data-bbox="491 1220 1337 1653">The screenshot shows the 'VNC® Viewer' dialog box. It has a title bar 'V2 VNC Viewer'. Inside, there's a 'VNC Server:' dropdown menu with '192.168.123.49' selected. Below it is an 'Encryption:' dropdown menu with 'Let VNC Server choose' selected. At the bottom, there are three buttons: 'About...', 'Options...', and 'Connect'.</div> <p>2. After new connection establishing, the VNC Viewer is connecting with two HMIs.</p>		

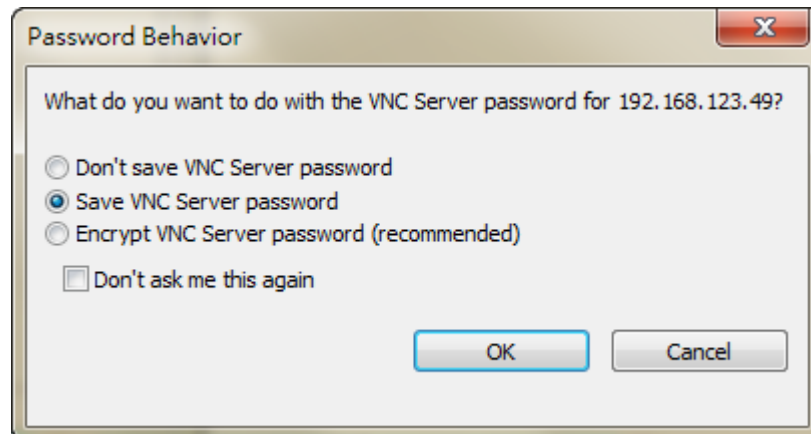
## How to use VNC Viewer to connect with HMI

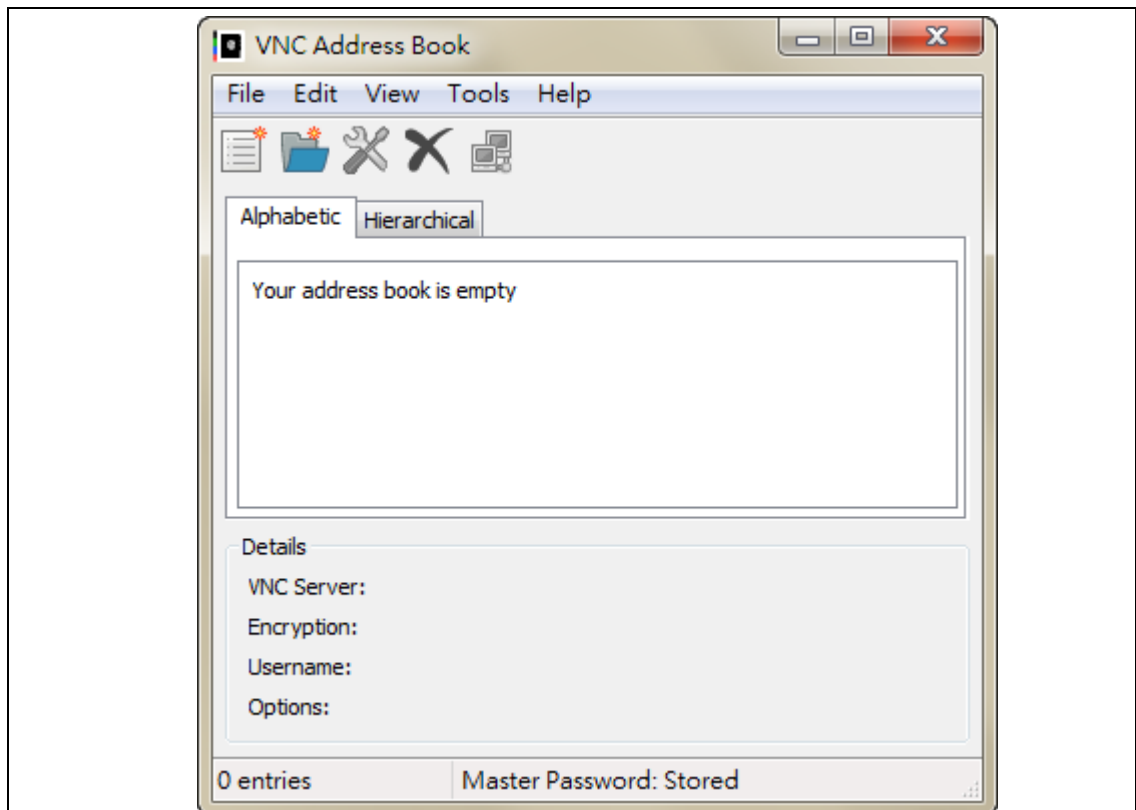


Save  
Connection

The save connection function could save the configuration for next time connection. User executes connection without type IP address and password.

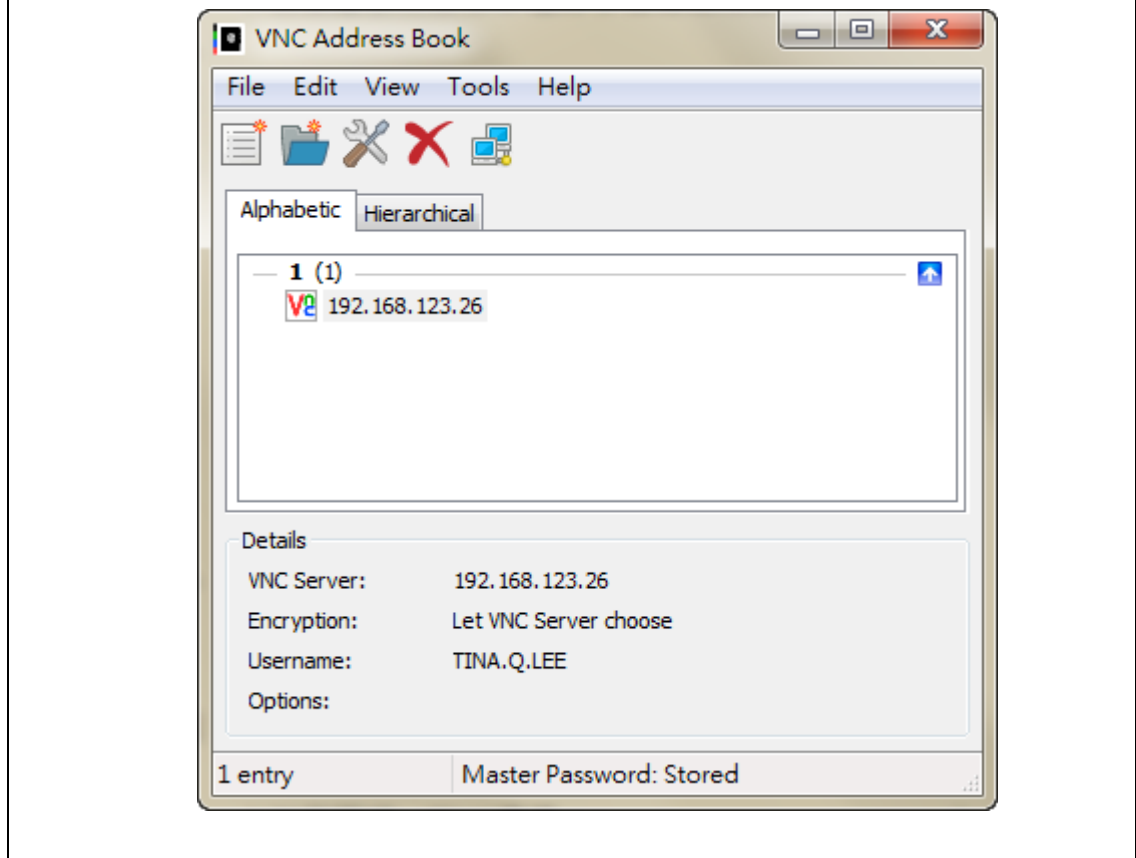
1. Click on , it will appear as below two windows.



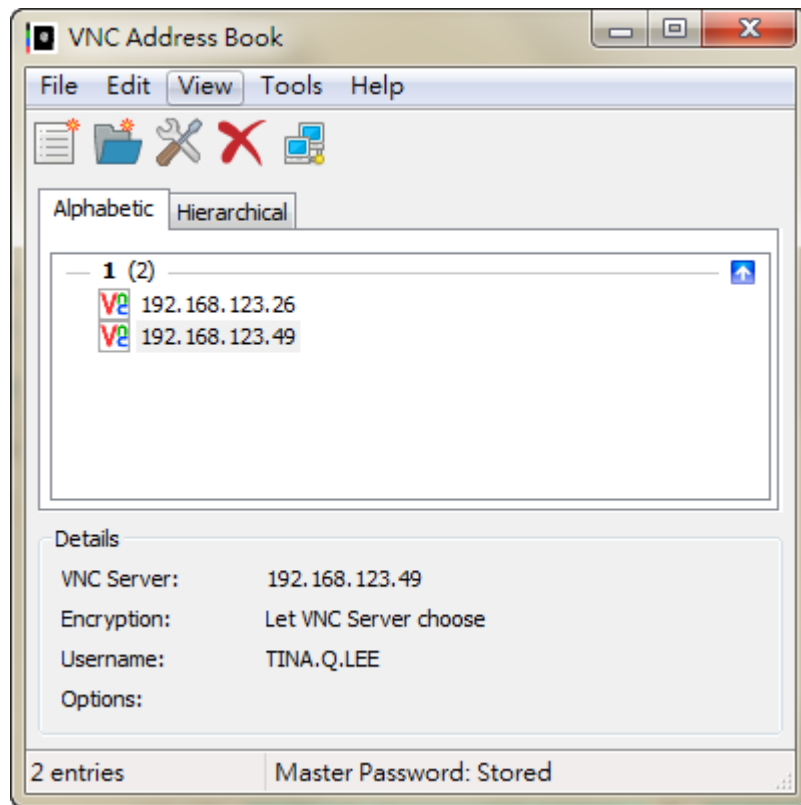


Please choose **Save VNC Server Password** in **Password Behavior** window, and then click on **OK** to save connection.


After saving, the configuration is saved as to **VNC Address Book**.




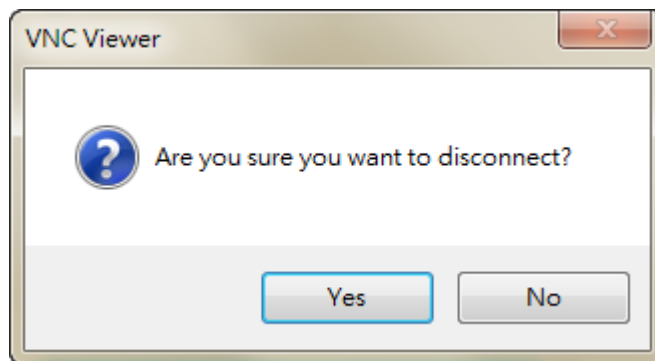
User also saves multiple connections as below figure.



Only start VNC Address Book and select the connected IP address when next connection.


	Close Connection	Close connection will close VNC Viewer with HMI connection
---	------------------	--

Click on  , it will ask users the following question.





Click on **Yes**, it will close the connection.

Click on **No**, the connection is still connecting.

	Options	Detailed setting for VNC Display, Inputs, Troubleshooting, and Expert. All of these configurations is VNC original setting, and use default parameters to connect with HMI. Therefore, this part
---	---------	--



		does not describe more explanation.
	Full Screen Mode	The function is display full screen.
	Connection Information	Get more connection information for VNC Viewer.

